



ADDRESS  
HARBOUR POINT



WHERE LIFE  
HAPPENS





# At the Crossroads

Address Harbour Point creates a visual gateway to Dubai Creek Harbour. Offering uninterrupted views of the iconic Dubai Creek Tower and the Downtown Dubai skyline, the serviced residences are truly stunning, outside and in.

# Limitless Activities with Uninterrupted Views

The luxury serviced residences offer seamless access to the marina, the park, and the pier, allowing residents to revel in countless dining, retail and entertainment experiences.





A SMILE  
IN THE  
MIND







# Your Ultimate Address

Stamp Address Harbour Point as your official address. Select from 1, 2, and 3 bedroom waterfront apartments. It is truly here where life happens!





# DUBAI CREEK

HARBOUR



ADDRESS  
HARBOUR POINT

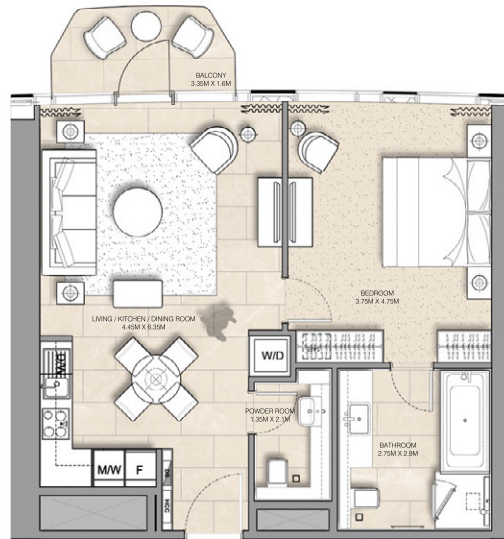
FLOOR PLANS





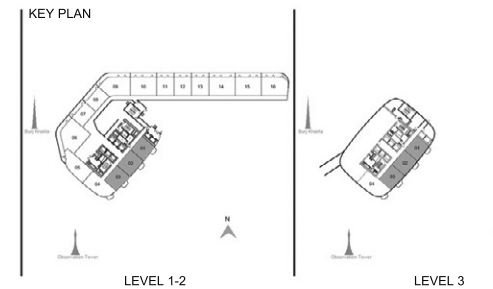
ADDRESS  
HARBOUR POINT

DUBAI CREEK  
HARBOUR



VILLAS APARTMENT  
1 BEDROOM APARTMENT - PD-1A

LEVEL	UNIT NUMBER	AREAS					
		UNIT AREA		BALCONY AREA		TOTAL AREA	
		SQM	SQFT	SQM	SQFT	SQM	SQFT
<b>PODIUM</b>							
PL.1	101	67.81	729.90	4.78	51.45	72.59	781.35
	102	69.73	750.57	4.73	50.91	74.46	801.48
	103	67.12	722.47	4.77	51.34	71.89	773.81
PL.2	201	67.70	728.72	4.74	51.02	72.44	779.74
	202	69.68	750.03	4.73	50.91	74.41	800.94
	203	67.02	721.40	4.77	51.34	71.79	772.74
PL.3	301	67.78	729.58	4.78	51.45	72.56	781.03
	302	69.88	752.18	4.73	50.91	74.61	803.09
	303	67.17	723.01	4.77	51.34	71.94	774.35



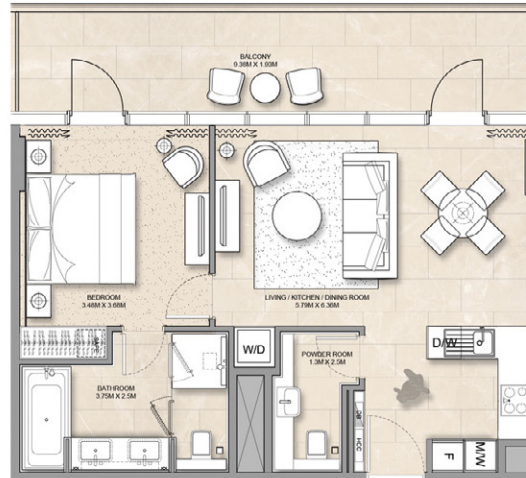
**FLOOR PLAN** 1. All dimensions are in imperial and metric, and measured from finish to finish excluding construction tolerances. 2. All materials, dimensions, and drawings are approximate only. 3. Information is subject to change without notice, at developer's absolute discretion. 4. Actual area may vary from the stated area. 5. Drawings not to scale. 6. All images used are for illustrative purposes only and do not represent the actual size, features, specifications, fittings, and furnishings. 7. The developer reserves the right to make revisions / alterations, at its absolute discretion, without any liability whatsoever.





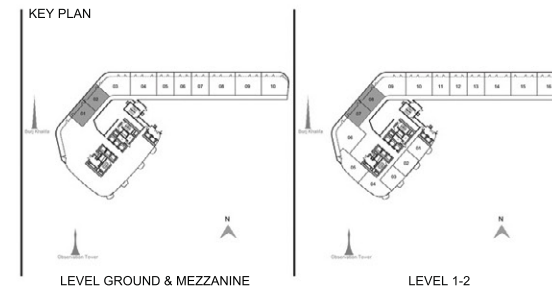
ADDRESS  
HARBOUR POINT

DUBAI CREEK  
HARBOUR



VILLAS APARTMENT  
1 BEDROOM APARTMENT - PD-1B

LEVEL	UNIT NUMBER	AREAS					
		UNIT AREA		BALCONY AREA		TOTAL AREA	
		SQM	SQFT	SQM	SQFT	SQM	SQFT
<b>PODIUM</b>							
GROUND	G01	62.40	671.67	18.92	203.65	81.32	875.32
	G02	62.48	672.53	18.90	203.44	81.38	875.97
MEZZANINE	M01	62.40	671.67	18.92	203.65	81.32	875.32
	M02	62.48	672.53	18.99	204.41	81.47	876.94
PL.1	107	62.40	671.67	18.90	203.44	81.30	875.11
	108	62.48	672.53	18.90	203.44	81.38	875.97
PL.2	207	62.72	675.11	18.68	201.07	81.40	876.18
	208	62.48	672.53	18.65	200.75	81.13	873.28



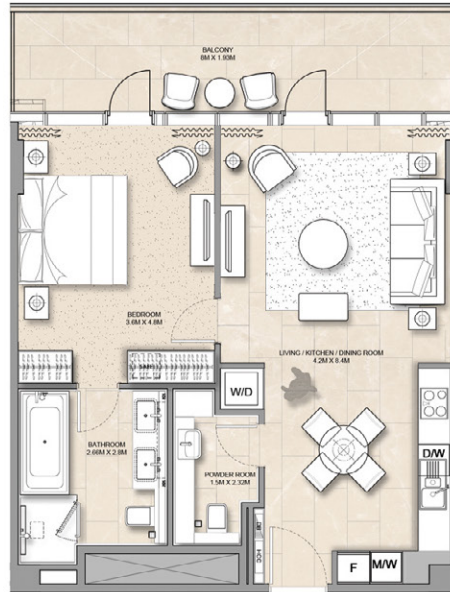
**FLOOR PLAN** 1. All dimensions are in imperial and metric, and measured from finish to finish excluding construction tolerances. 2. All materials, dimensions, and drawings are approximate only. 3. Information is subject to change without notice, at developer's absolute discretion. 4. Actual area may vary from the stated area. 5. Drawings not to scale. 6. All images used are for illustrative purposes only and do not represent the actual size, features, specifications, fittings, and furnishings. 7. The developer reserves the right to make revisions / alterations, at its absolute discretion, without any liability whatsoever.





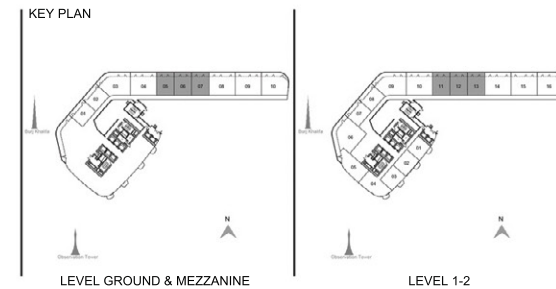
ADDRESS  
HARBOUR POINT

DUBAI CREEK  
HARBOUR



VILLAS APARTMENT  
1 BEDROOM APARTMENT - PD-1C

LEVEL	UNIT NUMBER	AREAS					
		UNIT AREA		BALCONY AREA		TOTAL AREA	
		SQM	SQFT	SQM	SQFT	SQM	SQFT
<b>PODIUM</b>							
GROUND	G05	68.68	739.27	16.14	173.73	84.82	913.00
	G06	68.68	739.27	16.14	173.73	84.82	913.00
	G07	68.68	739.27	16.14	173.73	84.82	913.00
MEZZANINE	M05	68.68	739.27	16.14	173.73	84.82	913.00
	M06	68.68	739.27	16.14	173.73	84.82	913.00
	M07	68.68	739.27	16.14	173.73	84.82	913.00
PL.1	111	68.68	739.27	16.14	173.73	84.82	913.00
	112	68.68	739.27	16.14	173.73	84.82	913.00
	113	68.68	739.27	16.14	173.73	84.82	913.00
PL.2	211	68.68	739.27	15.89	171.04	84.57	910.31
	212	68.68	739.27	15.89	171.04	84.57	910.31
	213	68.68	739.27	15.89	171.04	84.57	910.31



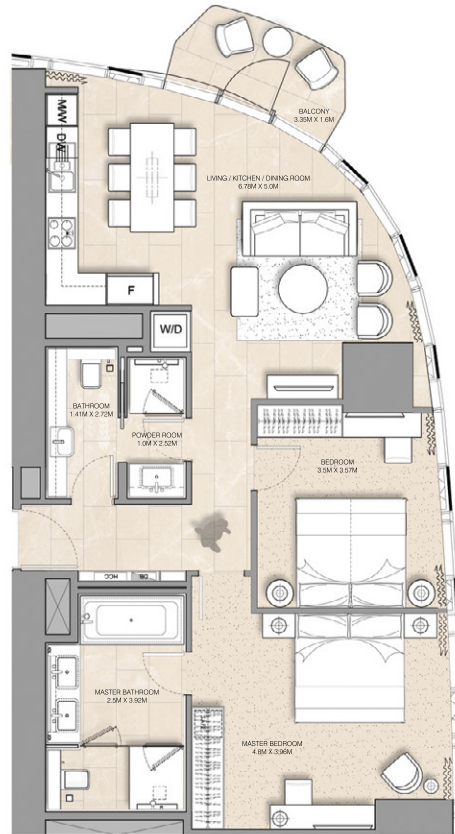
**FLOOR PLAN 1.** All dimensions are in imperial and metric, and measured from finish to finish excluding construction tolerances. 2. All materials, dimensions, and drawings are approximate only. 3. Information is subject to change without notice, at developer's absolute discretion. 4. Actual area may vary from the stated area. 5. Drawings not to scale. 6. All images used are for illustrative purposes only and do not represent the actual size, features, specifications, fittings, and furnishings. 7. The developer reserves the right to make revisions / alterations, at its absolute discretion, without any liability whatsoever.





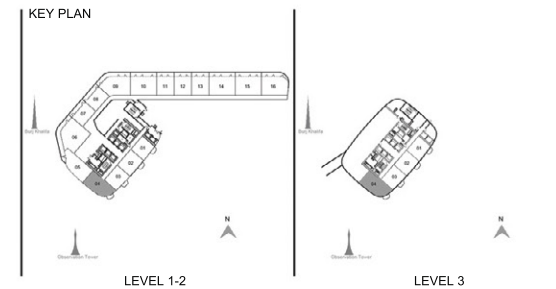
ADDRESS  
HARBOUR POINT

DUBAI CREEK  
HARBOUR



VILLAS APARTMENT  
2 BEDROOM APARTMENT - PD-2A.1

LEVEL	UNIT NUMBER	AREAS					
		UNIT AREA		BALCONY AREA		TOTAL AREA	
		SQM	SQFT	SQM	SQFT	SQM	SQFT
<b>PODIUM</b>							
PL.1	104	98.58	1061.11	4.75	51.13	103.33	1112.24
PL.2	204	98.35	1058.63	4.75	51.13	103.10	1109.76
PL.3	304	97.96	1054.43	4.75	51.13	102.71	1105.56



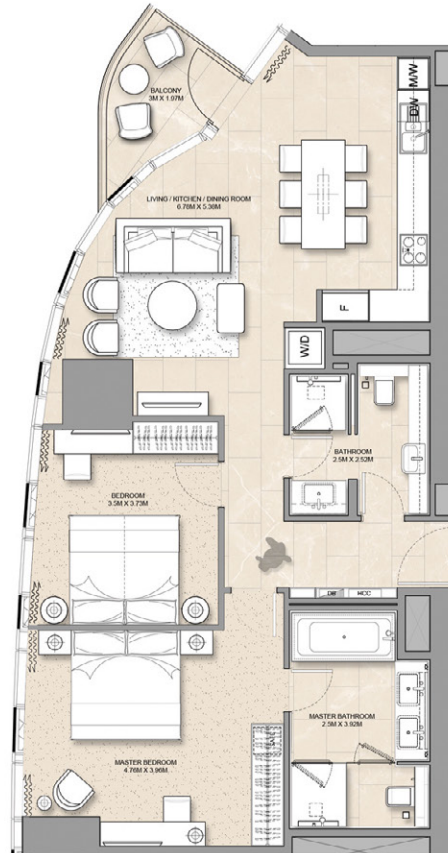
**FLOOR PLAN** 1. All dimensions are in imperial and metric, and measured from finish to finish excluding construction tolerances. 2. All materials, dimensions, and drawings are approximate only. 3. Information is subject to change without notice, at developer's absolute discretion. 4. Actual area may vary from the stated area. 5. Drawings not to scale. 6. All images used are for illustrative purposes only and do not represent the actual size, features, specifications, fittings, and furnishings. 7. The developer reserves the right to make revisions / alterations, at its absolute discretion, without any liability whatsoever.





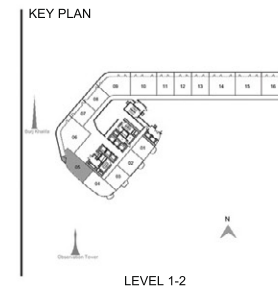
ADDRESS  
HARBOUR POINT

DUBAI CREEK  
HARBOUR



VILLAS APARTMENT  
2 BEDROOM APARTMENT - PD-2A.2

LEVEL	UNIT NUMBER	AREAS					
		UNIT AREA		BALCONY AREA		TOTAL AREA	
		SQM	SQFT	SQM	SQFT	SQM	SQFT
<b>PODIUM</b>							
PL.1	105	100.40	1080.70	5.84	62.86	106.24	1143.56
PL.2	205	100.14	1077.90	5.62	60.49	105.76	1138.39



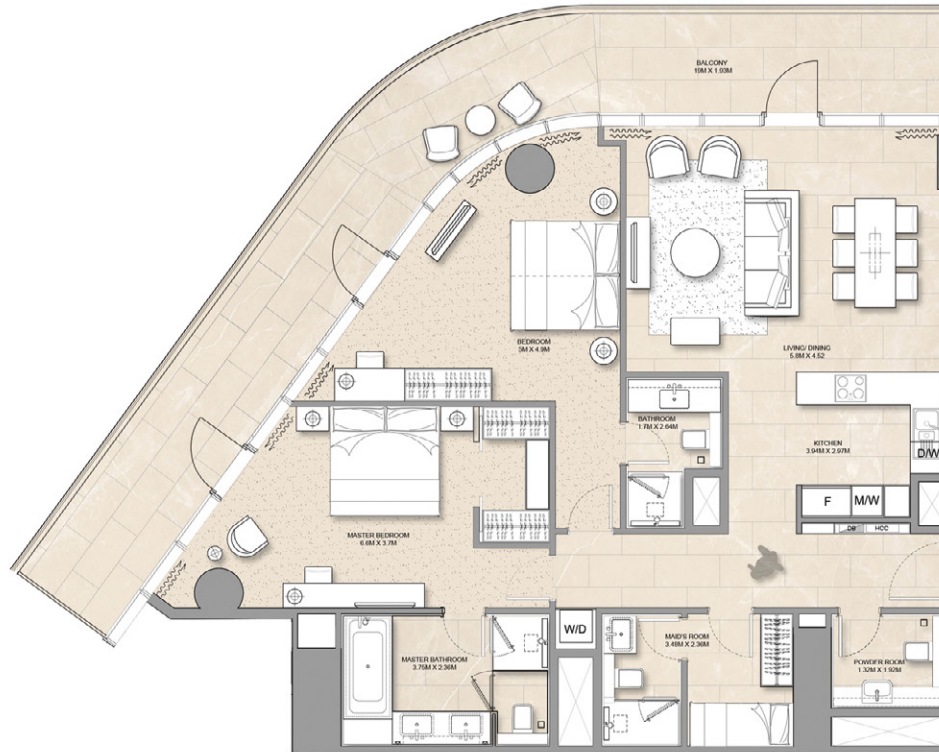
**FLOOR PLAN** 1. All dimensions are in imperial and metric, and measured from finish to finish excluding construction tolerances. 2. All materials, dimensions, and drawings are approximate only. 3. Information is subject to change without notice, at developer's absolute discretion. 4. Actual area may vary from the stated area. 5. Drawings not to scale. 6. All images used are for illustrative purposes only and do not represent the actual size, features, specifications, fittings, and furnishings. 7. The developer reserves the right to make revisions / alterations, at its absolute discretion, without any liability whatsoever.





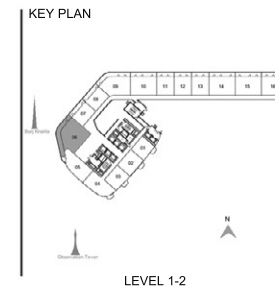
ADDRESS  
HARBOUR POINT

DUBAI CREEK  
HARBOUR



VILLAS APARTMENT  
2 BEDROOM APARTMENT - PD-2B

LEVEL	UNIT NUMBER	AREAS					
		UNIT AREA		BALCONY AREA		TOTAL AREA	
		SQM	SQFT	SQM	SQFT	SQM	SQFT
<b>PODIUM</b>							
PL.1	106	136.20	1466.04	40.89	440.14	177.09	1906.18
PL.2	206	136.04	1464.32	40.15	432.17	176.19	1896.49



**FLOOR PLAN 1.** All dimensions are in imperial and metric, and measured from finish to finish excluding construction tolerances. 2. All materials, dimensions, and drawings are approximate only. 3. Information is subject to change without notice, at developer's absolute discretion. 4. Actual area may vary from the stated area. 5. Drawings not to scale. 6. All images used are for illustrative purposes only and do not represent the actual size, features, specifications, fittings, and furnishings. 7. The developer reserves the right to make revisions / alterations, at its absolute discretion, without any liability whatsoever.



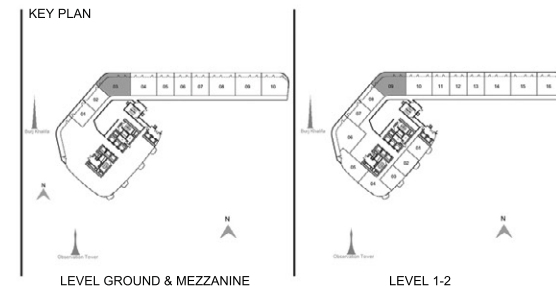
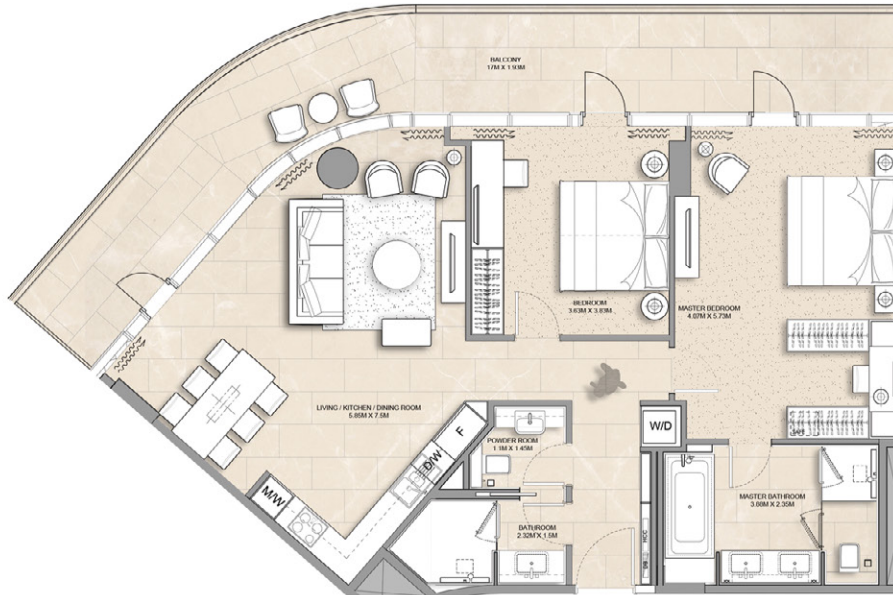


ADDRESS  
HARBOUR POINT

DUBAI CREEK  
HARBOUR

VILLAS APARTMENT  
2 BEDROOM APARTMENT - PD-2C

LEVEL	UNIT NUMBER	AREAS					
		UNIT AREA		BALCONY AREA		TOTAL AREA	
		SQM	SQFT	SQM	SQFT	SQM	SQFT
<b>PODIUM</b>							
GROUND	G03	108.98	1173.05	34.83	374.91	143.81	1547.96
MEZZANINE	M03	108.98	1173.05	34.83	374.91	143.81	1547.96
	PL.1	108.98	1173.05	34.83	374.91	143.81	1547.96
	PL.2	108.98	1173.05	34.28	368.09	143.26	1542.04



**FLOOR PLAN 1.** All dimensions are in imperial and metric, and measured from finish to finish excluding construction tolerances. 2. All materials, dimensions, and drawings are approximate only. 3. Information is subject to change without notice, at developer's absolute discretion. 4. Actual area may vary from the stated area. 5. Drawings not to scale. 6. All images used are for illustrative purposes only and do not represent the actual size, features, specifications, fittings, and furnishings. 7. The developer reserves the right to make revisions / alterations, at its absolute discretion, without any liability whatsoever.

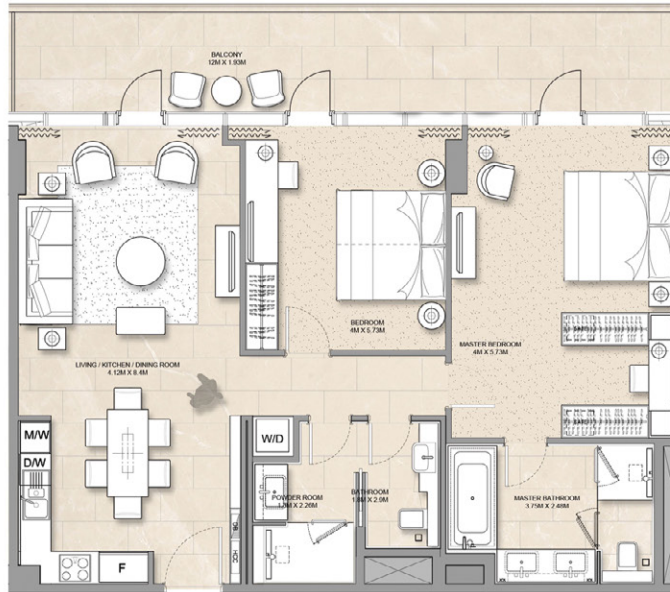






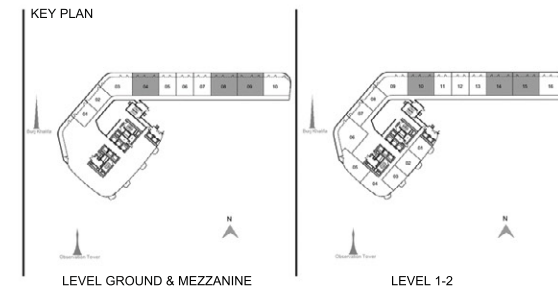
ADDRESS  
HARBOUR POINT

DUBAI CREEK  
HARBOUR



VILLAS APARTMENT  
2 BEDROOM APARTMENT - PD-2D

LEVEL	UNIT NUMBER	AREAS					
		UNIT AREA		BALCONY AREA		TOTAL AREA	
		SQM	SQFT	SQM	SQFT	SQM	SQFT
<b>PODIUM</b>							
GROUND	G04	104.16	1121.17	24.20	260.49	128.36	1381.66
	G08	104.16	1121.17	24.20	260.49	128.36	1381.66
	G09	104.16	1121.17	24.20	260.49	128.36	1381.66
MEZZANINE	M04	104.16	1121.17	24.20	260.49	128.36	1381.66
	M08	104.16	1121.17	24.20	260.49	128.36	1381.66
	M09	104.16	1121.17	24.20	260.49	128.36	1381.66
PL1	110	104.16	1121.17	24.20	260.49	128.36	1381.66
	114	104.16	1121.17	24.20	260.49	128.36	1381.66
	115	104.16	1121.17	24.20	260.49	128.36	1381.66
PL2	210	104.16	1121.17	23.84	256.61	128.00	1377.78
	214	104.16	1121.17	23.84	256.61	128.00	1377.78
	215	104.16	1121.17	23.84	256.61	128.00	1377.78



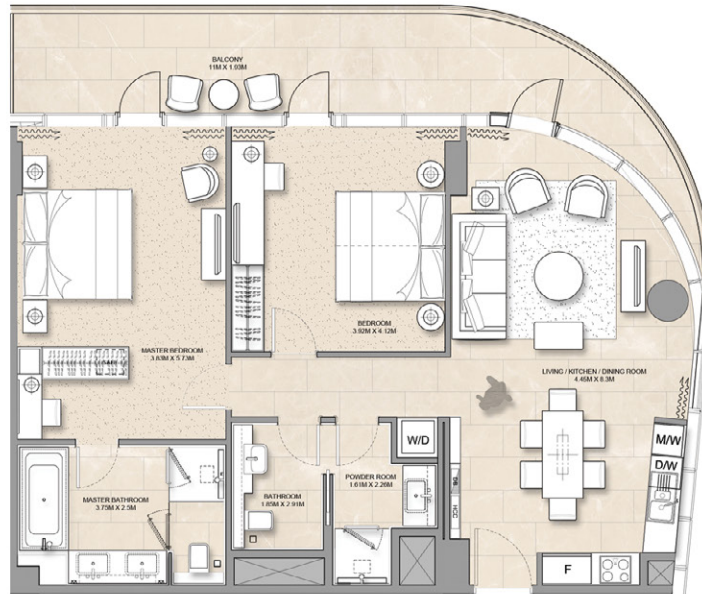
**FLOOR PLAN 1.** All dimensions are in imperial and metric, and measured from finish to finish excluding construction tolerances. 2. All materials, dimensions, and drawings are approximate only. 3. Information is subject to change without notice, at developer's absolute discretion. 4. Actual area may vary from the stated area. 5. Drawings not to scale. 6. All images used are for illustrative purposes only and do not represent the actual size, features, specifications, fittings, and furnishings. 7. The developer reserves the right to make revisions / alterations, at its absolute discretion, without any liability whatsoever.





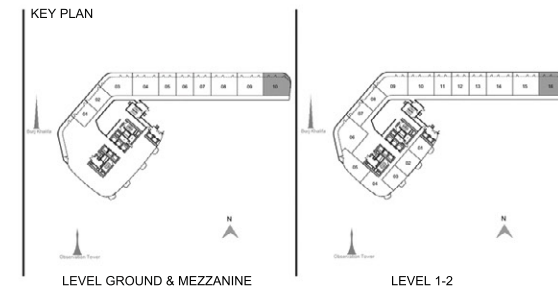
ADDRESS  
HARBOUR POINT

DUBAI CREEK  
HARBOUR



VILLAS APARTMENT  
2 BEDROOM APARTMENT - PD-2E

LEVEL	UNIT NUMBER	AREAS					
		UNIT AREA		BALCONY AREA		TOTAL AREA	
		SQM	SQFT	SQM	SQFT	SQM	SQFT
<b>PODIUM</b>							
GROUND	G10	104.84	1128.49	23.64	254.46	128.48	1382.95
MEZZANINE	M10	104.84	1128.49	23.64	254.46	128.48	1382.95
	PL.1	104.84	1128.49	23.64	254.46	128.48	1382.95
	PL.2	216	104.84	1128.49	23.15	249.18	1377.67



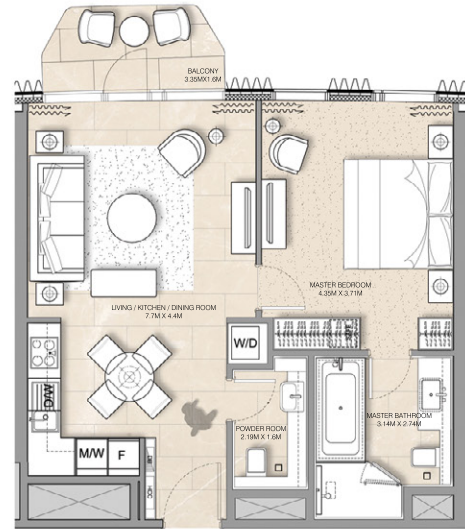
**FLOOR PLAN 1.** All dimensions are in imperial and metric, and measured from finish to finish excluding construction tolerances. 2. All materials, dimensions, and drawings are approximate only. 3. Information is subject to change without notice, at developer's absolute discretion. 4. Actual area may vary from the stated area. 5. Drawings not to scale. 6. All images used are for illustrative purposes only and do not represent the actual size, features, specifications, fittings, and furnishings. 7. The developer reserves the right to make revisions / alterations, at its absolute discretion, without any liability whatsoever.





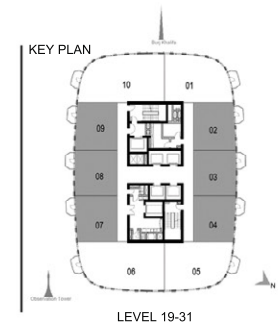
ADDRESS  
HARBOUR POINT

DUBAI CREEK  
HARBOUR



SERVICED APARTMENT  
1 BEDROOM APARTMENT - T1-1A

LEVEL	UNIT NUMBER	AREAS					
		UNIT AREA		BALCONY AREA		TOTAL AREA	
		SQM	SQFT	SQM	SQFT	SQM	SQFT
<b>TOWER 1</b>							
19/F	1902	62.63	674.14	2.99	32.18	65.62	706.32
	1903	62.71	675.00	2.80	30.14	65.51	705.14
	1904	62.68	674.68	2.99	32.18	65.67	706.86
	1907	63.30	681.36	2.99	32.18	66.29	713.54
	1908	62.69	674.79	2.80	30.14	65.49	704.93
	1909	61.90	666.79	2.99	32.18	64.89	698.47
20/F	2002	62.81	676.08	3.73	40.15	66.54	716.23
	2003	62.84	676.40	3.50	37.67	66.34	714.07
	2004	62.73	675.22	3.73	40.15	66.46	715.37
	2007	63.34	681.79	3.73	40.15	67.07	721.94
	2008	62.81	676.08	3.50	37.67	66.31	713.75
21/F - 31/F	2009	62.08	668.22	3.73	40.15	65.81	708.37
	2102-3102	62.81	676.08	4.47	48.11	67.28	724.19
	2103-3103	62.84	676.40	4.20	45.21	67.04	721.61
	2104-3104	62.75	675.44	4.47	48.11	67.22	723.55
	2107-3017	63.34	681.79	4.47	48.11	67.81	729.90
	2108-3108	62.81	676.08	4.20	45.21	67.01	721.29
	2109-3109	62.08	668.22	4.47	48.11	66.55	716.33



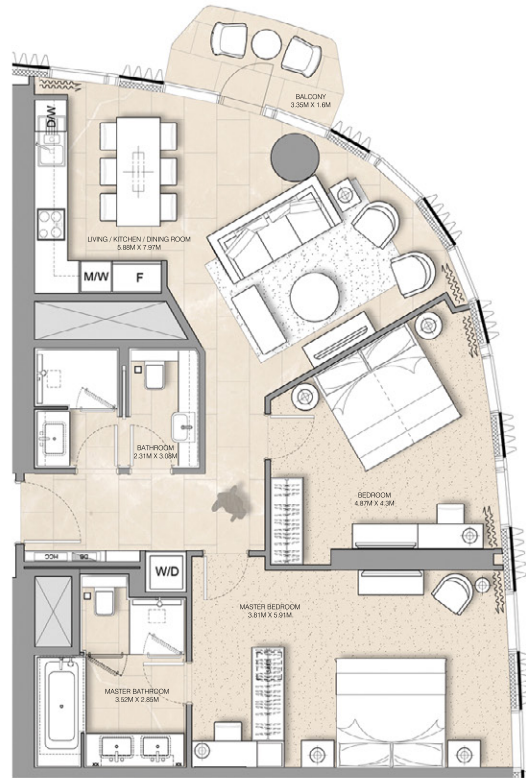
**FLOOR PLAN 1.** All dimensions are in imperial and metric, and measured from finish to finish excluding construction tolerances. 2. All materials, dimensions, and drawings are approximate only. 3. Information is subject to change without notice, at developer's absolute discretion. 4. Actual area may vary from the stated area. 5. Drawings not to scale. 6. All images used are for illustrative purposes only and do not represent the actual size, features, specifications, fittings, and furnishings. 7. The developer reserves the right to make revisions / alterations, at its absolute discretion, without any liability whatsoever.





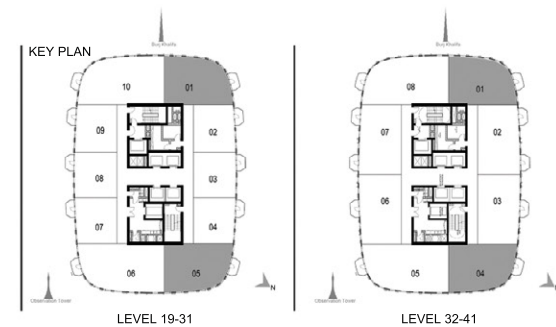
ADDRESS  
HARBOUR POINT

DUBAI CREEK  
HARBOUR



SERVICED APARTMENT  
2 BEDROOM APARTMENT - T1-2A

LEVEL	UNIT NUMBER	AREAS					
		UNIT AREA		BALCONY AREA		TOTAL AREA	
		SQM	SQFT	SQM	SQFT	SQM	SQFT
<b>TOWER 1</b>							
19/F	1901	99.83	1074.56	3.16	34.01	102.99	1108.57
	1905	99.83	1074.56	3.16	34.01	102.99	1108.57
20/F	2001	99.83	1074.56	3.91	42.09	103.74	1116.65
	2005	99.83	1074.56	3.91	42.09	103.74	1116.65
21/F-31/F	2101-3101	99.86	1074.88	4.63	49.84	104.49	1124.72
	2105-3105	99.83	1074.56	4.63	49.84	104.46	1124.40
32/F-41/F	3201-4101	100.06	1077.04	4.63	49.84	104.69	1126.88
	3204-4104	100.04	1076.82	4.63	49.84	104.67	1126.66



**FLOOR PLAN 1.** All dimensions are in imperial and metric, and measured from finish to finish excluding construction tolerances. 2. All materials, dimensions, and drawings are approximate only. 3. Information is subject to change without notice, at developer's absolute discretion. 4. Actual area may vary from the stated area. 5. Drawings not to scale. 6. All images used are for illustrative purposes only and do not represent the actual size, features, specifications, fittings, and furnishings. 7. The developer reserves the right to make revisions / alterations, at its absolute discretion, without any liability whatsoever.



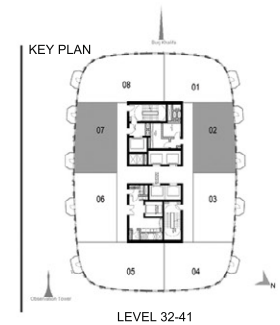
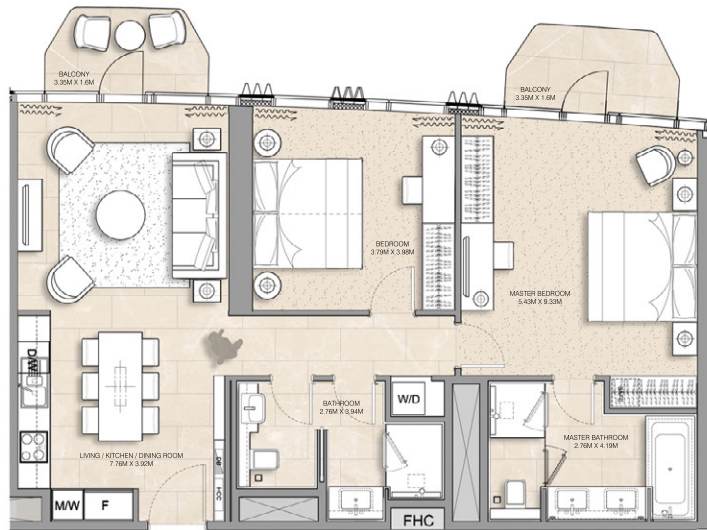


ADDRESS  
HARBOUR POINT

DUBAI CREEK  
HARBOUR

SERVICED APARTMENT  
2 BEDROOM APARTMENT - T1-2B

LEVEL	UNIT NUMBER	AREAS					
		UNIT AREA		BALCONY AREA		TOTAL AREA	
		SQM	SQFT	SQM	SQFT	SQM	SQFT
<b>TOWER 1</b>							
32/F-41/F	3202-4102	95.89	1032.15	8.67	93.32	104.56	1125.47
	3207-4107	95.52	1028.17	8.67	93.32	104.19	1121.49



**FLOOR PLAN** 1. All dimensions are in imperial and metric, and measured from finish to finish excluding construction tolerances. 2. All materials, dimensions, and drawings are approximate only. 3. Information is subject to change without notice, at developer's absolute discretion. 4. Actual area may vary from the stated area. 5. Drawings not to scale. 6. All images used are for illustrative purposes only and do not represent the actual size, features, specifications, fittings, and furnishings. 7. The developer reserves the right to make revisions / alterations, at its absolute discretion, without any liability whatsoever.



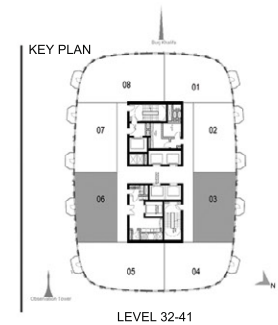
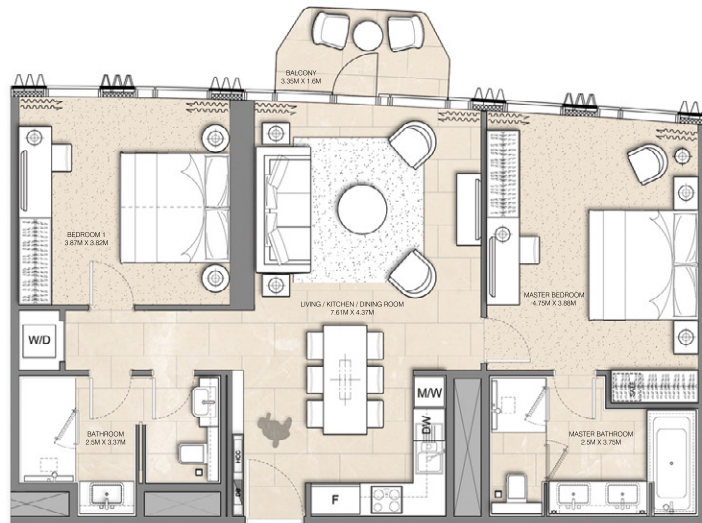


ADDRESS  
HARBOUR POINT

DUBAI CREEK  
HARBOUR

SERVICED APARTMENT  
2 BEDROOM APARTMENT - T1-2C

LEVEL	UNIT NUMBER	AREAS					
		UNIT AREA		BALCONY AREA		TOTAL AREA	
		SQM	SQFT	SQM	SQFT	SQM	SQFT
<b>TOWER 1</b>							
32/F-41-F	3203-4103	96.06	1033.98	4.47	48.11	100.53	1082.09
	3206-4106	96.51	1038.82	4.47	48.11	100.98	1086.93



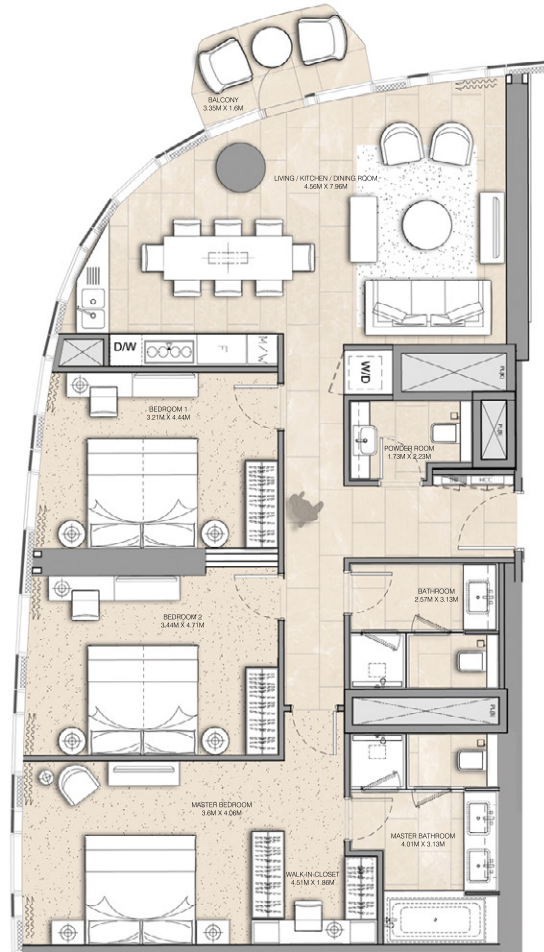
**FLOOR PLAN 1.** All dimensions are in imperial and metric, and measured from finish to finish excluding construction tolerances. 2. All materials, dimensions, and drawings are approximate only. 3. Information is subject to change without notice, at developer's absolute discretion. 4. Actual area may vary from the stated area. 5. Drawings not to scale. 6. All images used are for illustrative purposes only and do not represent the actual size, features, specifications, fittings, and furnishings. 7. The developer reserves the right to make revisions / alterations, at its absolute discretion, without any liability whatsoever.





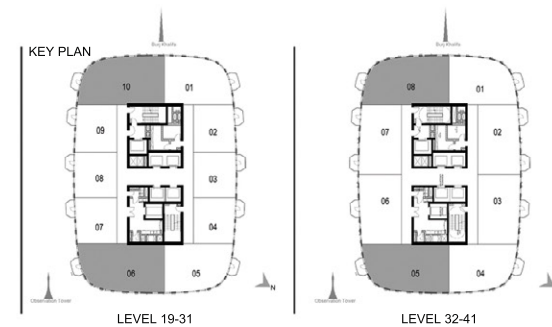
ADDRESS  
HARBOUR POINT

DUBAI CREEK  
HARBOUR



SERVICED APARTMENT  
3 BEDROOM APARTMENT - T1-3A

LEVEL	UNIT NUMBER	AREAS					
		UNIT AREA		BALCONY AREA		TOTAL AREA	
		SQM	SQFT	SQM	SQFT	SQM	SQFT
<b>TOWER 1</b>							
19/F	1906	128.28	1380.79	3.16	34.01	131.44	1414.80
	1910	128.22	1380.15	3.16	34.01	131.38	1414.16
20/F	2006	128.28	1380.79	3.91	42.09	132.19	1422.88
	2010	128.22	1380.15	3.91	42.09	132.13	1422.24
21/F-31/F	2106-3106	128.28	1380.79	4.63	49.84	132.91	1430.63
	2110-3110	128.22	1380.15	4.63	49.84	132.85	1429.99
32/F-41/F	3205-4105	128.52	1383.38	4.63	49.84	133.15	1433.22
	3208-4108	128.48	1382.95	4.63	49.84	133.11	1432.79



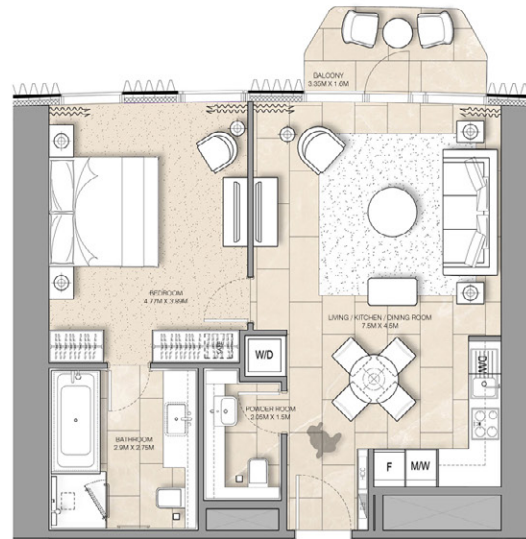
**FLOOR PLAN 1.** All dimensions are in imperial and metric, and measured from finish to finish excluding construction tolerances. 2. All materials, dimensions, and drawings are approximate only. 3. Information is subject to change without notice, at developer's absolute discretion. 4. Actual area may vary from the stated area. 5. Drawings not to scale. 6. All images used are for illustrative purposes only and do not represent the actual size, features, specifications, fittings, and furnishings. 7. The developer reserves the right to make revisions / alterations, at its absolute discretion, without any liability whatsoever.





ADDRESS  
HARBOUR POINT

DUBAI CREEK  
HARBOUR



SERVICED APARTMENT  
1 BEDROOM APARTMENT - T2-1A

LEVEL	UNIT NUMBER	AREAS					
		UNIT AREA		BALCONY AREA		TOTAL AREA	
		SQM	SQFT	SQM	SQFT	SQM	SQFT
<b>TOWLER 2</b>							
4/F-15/F	402-1502	67.62	727.86	4.77	51.34	72.39	779.20
	403-1503	69.47	747.77	4.73	50.91	74.20	798.68
	404-1504	66.98	720.97	4.78	51.45	71.76	772.42
	407-1507	67.58	727.43	4.78	51.45	72.36	778.88
	408-1508	69.47	747.77	4.73	50.91	74.20	798.68
16/F	409-1509	66.98	720.97	4.77	51.34	71.75	772.31
	1602	67.62	727.86	3.99	42.95	71.61	770.81
	1603	69.47	747.77	3.95	42.52	73.42	790.29
	1604	66.98	720.97	4.00	43.06	70.98	764.03
	1607	67.58	727.43	4.00	43.06	71.58	770.49
17/F	1608	69.47	747.77	3.95	42.52	73.42	790.29
	1609	66.98	720.97	3.99	42.95	70.97	763.92
	1702	67.62	727.86	3.20	34.44	70.82	762.30
	1703	69.47	747.77	3.18	34.23	72.65	782.00
	1704	66.98	720.97	3.21	34.55	70.19	755.52
19/F	1707	67.58	727.43	3.21	34.55	70.79	761.98
	1708	69.47	747.77	3.18	34.23	72.65	782.00
	1709	66.98	720.97	3.20	34.44	70.18	755.41
	1903	67.06	721.83	3.20	34.44	70.26	756.27
	1906	67.62	727.86	3.20	34.44	70.82	762.30
20/F	2003	67.06	721.83	3.99	42.95	71.05	764.78
	2006	67.62	727.86	3.99	42.95	71.61	770.81
21/F-41/F	2103-4103	67.06	721.83	4.77	51.34	71.83	773.17
	2106-4106	67.62	727.86	4.77	51.34	72.39	779.20
43/F-52/F	4303-5203	67.06	721.83	4.77	51.34	71.83	773.17
	4306-5206	67.62	727.86	4.77	51.34	72.39	779.20
53/F	5303	66.61	716.98	4.77	51.34	71.38	768.32
	5306	67.20	723.33	4.77	51.34	71.97	774.67
54/F	5403	65.82	708.48	4.73	50.91	70.55	759.39
	5406	66.42	714.94	4.73	50.91	71.15	765.85



**FLOOR PLAN 1.** All dimensions are in imperial and metric, and measured from finish to finish excluding construction tolerances. 2. All materials, dimensions, and drawings are approximate only. 3. Information is subject to change without notice, at developer's absolute discretion. 4. Actual area may vary from the stated area. 5. Drawings not to scale. 6. All images used are for illustrative purposes only and do not represent the actual size, features, specifications, fittings, and furnishings. 7. The developer reserves the right to make revisions / alterations, at its absolute discretion, without any liability whatsoever.

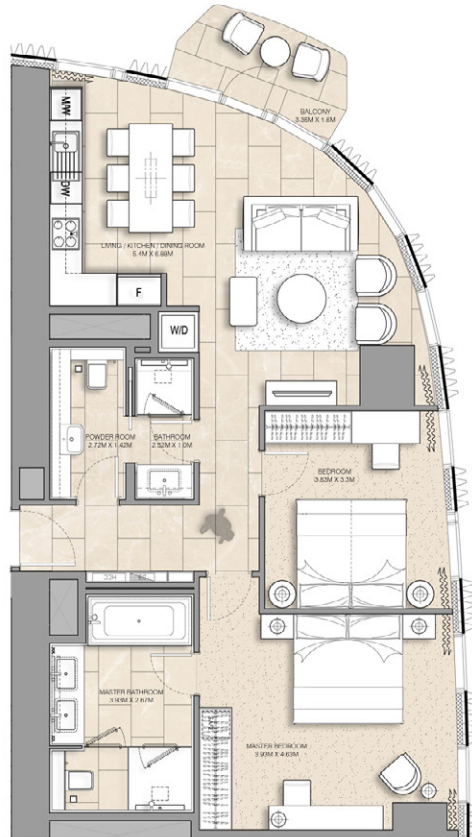






# ADDRESS HARBOUR POINT

# DUBAI CREEK HARBOUR



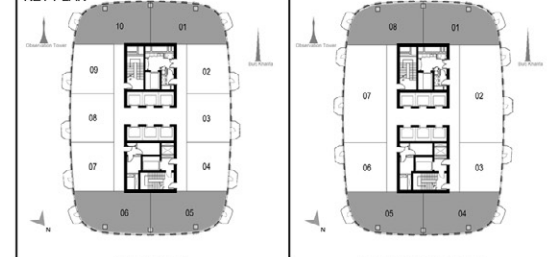
## SERVICED APARTMENT 2 BEDROOM APARTMENT - T2-2A

LEVEL	UNIT NUMBER	AREAS			
		UNIT AREA	BALCONY AREA	TOTAL AREA	
		SQM	SQFT	SQM	SQFT

### TOWLER 2

4/F-15/F	401-1501	97.59	1050.45	4.78	51.45	102.37	1101.90
	405-1505	97.59	1050.45	4.77	51.34	102.36	1101.79
	406-1506	97.59	1050.45	4.78	51.45	102.37	1101.90
	410-1510	97.59	1050.45	4.77	51.34	102.36	1101.79
16/F	1601	97.64	1050.99	4.06	43.70	101.70	1094.69
	1605	97.61	1050.67	4.06	43.70	101.67	1094.37
	1606	97.61	1050.67	4.06	43.70	101.67	1094.37
	1610	97.64	1050.99	4.06	43.70	101.70	1094.69
17/F	1701	97.64	1050.99	3.29	35.41	100.93	1086.40
	1705	97.61	1050.67	3.29	35.41	100.90	1086.08
	1706	97.61	1050.67	3.29	35.41	100.90	1086.08
	1710	97.64	1050.99	3.29	35.41	100.93	1086.40
19/F	1901	97.68	1051.42	3.29	35.41	100.97	1086.83
	1904	97.65	1051.10	3.29	35.41	100.94	1086.51
	1905	97.68	1051.42	3.29	35.41	100.97	1086.83
	1908	97.70	1051.63	3.29	35.41	100.99	1087.04
20/F	2001	97.68	1051.42	4.06	43.70	101.74	1095.12
	2004	97.65	1051.10	4.03	43.38	101.68	1094.48
	2005	97.68	1051.42	4.03	43.38	101.71	1094.80
	2008	97.70	1051.63	4.06	43.70	101.76	1095.33
21/F-41/F	2101-4101	97.68	1051.42	4.77	51.34	102.45	1102.76
	2104-4104	97.65	1051.10	4.76	51.24	102.41	1102.34
	2105-4105	97.68	1051.42	4.76	51.24	102.44	1102.66
	2108-4108	97.70	1051.63	4.77	51.34	102.47	1102.97
43/F-52/F	4301-5201	97.68	1051.42	4.77	51.34	102.45	1102.76
	4304-5204	97.65	1051.10	4.76	51.24	102.41	1102.34
	4305-5205	97.68	1051.42	4.76	51.24	102.44	1102.66
	4308-5208	97.70	1051.63	4.77	51.34	102.47	1102.97
53/F	5301	96.64	1040.22	4.77	51.34	101.41	1091.56
	5304	96.34	1037.00	4.77	51.34	101.11	1088.34
	5305	96.34	1037.00	4.77	51.34	101.11	1088.34
	5308	96.64	1040.22	4.77	51.34	101.41	1091.56
54/F	5401	94.75	1019.88	4.14	44.56	98.89	1064.44
	5404	94.31	1015.14	4.86	52.31	99.17	1067.45
	5405	94.31	1015.14	4.86	52.31	99.17	1067.45
	5408	94.75	1019.88	4.14	44.56	98.89	1064.44

### KEY PLAN



LEVEL 4-17

LEVEL 19-41 & 43-54

**FLOOR PLAN 1.** All dimensions are in imperial and metric, and measured from finish to finish excluding construction tolerances. 2. All materials, dimensions, and drawings are approximate only. 3. Information is subject to change without notice, at developer's absolute discretion. 4. Actual area may vary from the stated area. 5. Drawings not to scale. 6. All images used are for illustrative purposes only and do not represent the actual size, features, specifications, fittings, and furnishings. 7. The developer reserves the right to make revisions / alterations, at its absolute discretion, without any liability whatsoever.





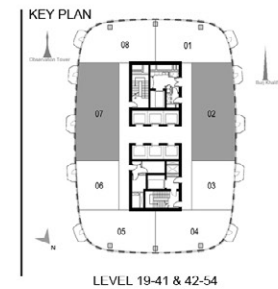
ADDRESS  
HARBOUR POINT

DUBAI CREEK  
HARBOUR



SERVICED APARTMENT  
3 BEDROOM APARTMENT - T2-3A

LEVEL	UNIT NUMBER	AREAS					
		UNIT AREA		BALCONY AREA		TOTAL AREA	
		SQM	SQFT	SQM	SQFT	SQM	SQFT
<b>TOWLR 2</b>							
19/F	1902	139.27	1499.09	6.39	68.78	145.66	1567.87
	1907	138.66	1492.52	6.39	68.78	145.05	1561.30
20/F	2002	139.27	1499.09	7.95	85.57	147.22	1584.66
	2007	138.66	1492.52	7.95	85.57	146.61	1578.09
21-41/F	2102-4102	139.27	1499.09	9.51	102.36	148.78	1601.45
	2107-4107	138.66	1492.52	9.51	102.36	148.17	1594.88
43-52/F	4302-5202	139.27	1499.09	9.51	102.36	148.78	1601.45
	4307-5207	138.66	1492.52	9.51	102.36	148.17	1594.88
53/F	5302	138.37	1489.40	9.51	102.36	147.88	1591.76
	5307	137.82	1483.48	9.51	102.36	147.33	1585.84
54/F	5402	136.83	1472.83	9.43	101.50	146.26	1574.33
	5407	136.29	1467.01	9.43	101.50	145.72	1568.51



**FLOOR PLAN** 1. All dimensions are in imperial and metric, and measured from finish to finish excluding construction tolerances. 2. All materials, dimensions, and drawings are approximate only. 3. Information is subject to change without notice, at developer's absolute discretion. 4. Actual area may vary from the stated area. 5. Drawings not to scale. 6. All images used are for illustrative purposes only and do not represent the actual size, features, specifications, fittings, and furnishings. 7. The developer reserves the right to make revisions / alterations, at its absolute discretion, without any liability whatsoever.





# ADDRESS HARBOUR POINT

For more information on  
**Address Harbour Point at Dubai Creek Harbour,**  
please call 800 36227(UAE) or  
+971 4 366 1688 (International).  
Visit our online sales centre at [emaar.com](http://emaar.com)  
or any of our sales centres across the UAE.

#### DUBAI:

Emaar Sales Centre, Downtown Dubai  
Dubai Creek Harbour Sales Pavilion, Ras Al Khor  
Dubai Hills Estate Sales Pavilion, Umm Suqeim Road

#### ABU DHABI:

Emaar Sales Centre, Al Nahda Tower,  
Ground Floor, 4th Street,  
Corniche, Al Muroor Road

Open from Saturday - Thursday, from 8:30am - 6pm

